

# LMArte™

LM

feel the difference



## SCULPT MASTERPIECES

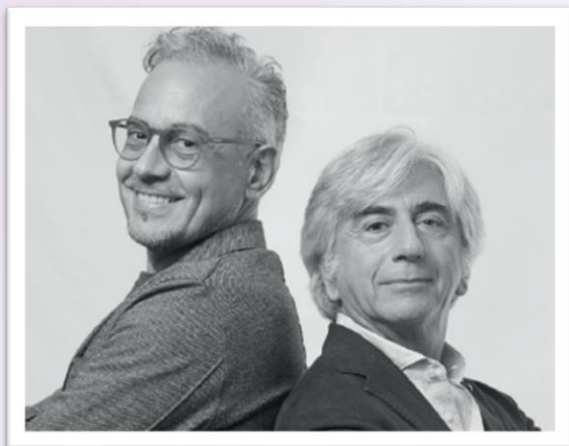


## ESTHETIC LAYERING SUCCESS

LM-Arte™ is a set of innovative instruments for esthetic restorations that is designed especially for composite layering. Each instrument is color-coded and named after its main function, enabling you to administer easy, efficient and quick restorative treatments. The lightweight and ergonomic LM™ handle design, together with high-quality tip materials, provides excellent tactile sensitivity and easy handling for the best clinical results.

### COLLABORATION WITH STYLEITALIANO™

LM-Arte™ instrument series has been developed in collaboration with Style Italiano™, a group of skilled dentists who share our passion for improving dentistry.



The StyleItaliano™ movement emerged from a simple idea of two friends - Dr. Walter Devoto and Dr. Angelo Putignano. The renowned experts in conservative and esthetic dentistry had noticed that although materials suitable for creating beautiful direct restorations were available, appropriate instruments for employing these successfully were lacking. With LM-Dental™'s dedication to manufacturing excellence the unique concept of LM-Arte™ instruments was developed, and it has been a breakthrough in esthetic dentistry.



LMArte™ Dark Diamond edition

## PLEASANT AND PRECISE SCULPTING OF COMPOSITE

LM-Arte™ Dark Diamond instruments are the newest outcome of StyleItaliano™ and LM-Dental™ collaboration featuring exclusive coating for smooth and precise non-stick placement and sculpting of composite resins.



The sensitivity, flexibility and precision are the same as with conventional LM-Arte™ instruments, but the LM Dark Diamond™ coating eliminates the issue of resin sticking to spatulas, even for the most delicate resins."

*Dr. Paulo Monteiro, Honorary Member of StyleItaliano™*

What do the  
StyleItaliano™  
experts say?  
Watch the video!



NEW!

LM

feel the  
difference



# PRODUCT RANGE WITH NON-STICK COATING



LM-Arte™ Eccesso DD **LMErgoSense®** LM 307-308DDES



LM-Arte™ Modella DD **LMErgoSense®** LM 442-443DDES



LM-Arte™ Fissura DD **LMErgoSense®** LM 481-487DDES



LM-Arte™ Applica DD **LMErgoSense®** LM 46-49DDES



LM-Arte™ Condensa DD **LMErgoSense®** LM 488-489DDES

## LM Dark Diamond™ unique benefits!

- Contemporary diamond-like carbon (DLC) coating reduces stickiness for smooth composite placement
- Hard surface protecting the tip from scratches
- Smooth surface for easy cleaning
- Dark coating color for minimal reflections, and maximal contrast against filling
- Ergonomic LM-ErgoSense® handle for excellent precision and feel

## LM-Arte™ Dark Diamond set

Set of LM-Arte™ instruments with exclusive non-stick LM Dark Diamond™ coating in LM-Servo™ 5 cassette including

- LM-Arte™ Eccesso DD,
- LM-Arte™ Modella DD,
- LM-Arte™ Fissura DD,
- LM-Arte™ Applica DD
- LM-Arte™ Condensa DD

**LMErgoSense®** LM 6845ES



# COMPREHENSIVE INSTRUMENT RANGE



LM-Arte™ Applicata

**LMErgoSense®** LM 46-49 ES  
**LMErgoMax™** LM 46-49 XSI



LM-Arte™ Applicata Twist

**LMErgoSense®** LM 464-494 ES  
**LMErgoMax™** LM 464-494 XSI



LM-Arte™ Modella

**LMErgoSense®** LM 442-443 ES  
**LMErgoMax™** LM 442-443 XSI



LM-Arte™ Condensa

**LMErgoSense®** LM 488-489 ES  
**LMErgoMax™** LM 488-489 XSI



LM-Arte™ Misura

**LMErgoSense®** LM 496-497 ES  
**LMErgoMax™** LM 496-497 XSI



LM-Arte™ Posterior Misura

**LMErgoSense®** LM 498-499 ES  
**LMErgoMax™** LM 498-499 XSI



LM-Arte™ Cusp Misura

**LMErgoSense®** LM 468-469 ES  
**LMErgoMax™** LM 468-469 XSI



LM-Arte™ Fissura

**LMErgoSense®** LM 481-487 ES  
**LMErgoMax™** LM 481-487 XSI



LM-Arte™ Eccesso

**LMErgoSense®** LM 307-308 ES  
**LMErgoMax™** LM 307-308 XSI



LM-Arte™ Solo Anterior

**LMErgoSense®** LM 431-433 ES  
**LMErgoMax™** LM 431-433 XSI



LM-Arte™ Solo Posterior

**LMErgoSense®** LM 434-438 ES  
**LMErgoMax™** LM 434-438 XSI



LM-Arte™ Replica Posterior

**LMErgoSense®** LM 448-449 ES  
**LMErgoMax™** LM 448-449 XSI



# COMPREHENSIVE INSTRUMENT RANGE

**LM** feel the difference



## LM-Arte™ Set

Full set of instruments for anterior restorations in LM-Servo™ 5 cassette including

- LM-Arte™ Eccesso,
- LM-Arte™ Misura,
- LM-Arte™ Fissura,
- LM-Arte™ Applica
- LM-Arte™ Condensa

**LMErgoSense®**

LM 6840 ES

**LMErgoMax™**

LM 6840 XSI



## LM-Arte™ Posterior Set

Full set of instruments for posterior restorations in LM-Servo™ 5 cassette including

- LM-Arte™ Posterior Misura,
- LM-Arte™ Cusp Misura,
- LM-Arte™ Fissura,
- LM-Arte™ Modella
- LM-Arte™ Condensa

**LMErgoSense®**

LM 6844 ES

**LMErgoMax™**

LM 6844 XSI



## LM-Arte™ Complete Set

Full set of instruments for any restoration cases in LM-Servo™ 8 cassette including

- LM-Arte™ Eccesso,
- LM-Arte™ Misura,
- LM-Arte™ Applica,
- LM-Arte™ Posterior Misura,
- LM-Arte™ Cusp Misura,
- LM-Arte™ Fissura,
- LM-Arte™ Modella
- LM-Arte™ Condensa

**LMErgoSense®**

LM 6848 ES

**LMErgoMax™**

LM 6848 XSI

## Handle options



**LMErgoSense®**

All LM-Arte™ instruments are available with LMErgoSense® handle with larger diameter and design providing exceptional grip proven to be ergonomic and efficient in scientific clinical testing. Ø 13.7 mm

LM-ErgoSense® handle is available with an integrated LM DTS™ RFID tag, a unique feature for improved asset management and patient safety. See more at [www.dentaltracking.com](http://www.dentaltracking.com).



**LMErgoMax™**

Uncoated instruments are available also with the classic ergonomic handle design which functions well in all clinical procedures and guarantees excellent tactile sensitivity. Ø 11.5 mm

# REPLICATE EASILY

## LM-Arte™ Replica Posterior

Clever instrument designed for simplifying occlusal modeling of posterior teeth in direct composite restorations. The instrument makes occlusal modeling fast, simple and predictable. Occlusal anatomy of single tooth can be made easily guided by the buccal cusps using replica technique with this specific instrument

### Adapt



### Shape



### Replicate



#### Concave surface

- Cusp accentuation
- Ridge formation
- Cusp demarcation
- Removing excess composite

#### Convex profile

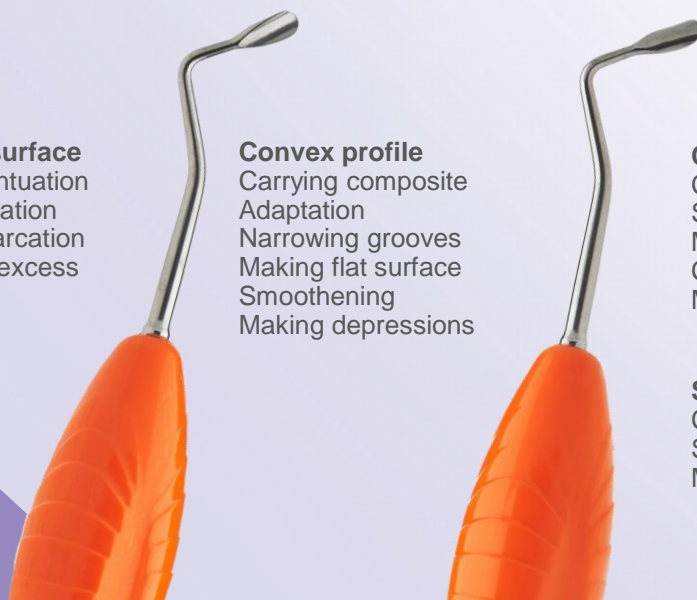
- Carrying composite
- Adaptation
- Narrowing grooves
- Making flat surface
- Smoothing
- Making depressions

#### Curved sharp edge for

- Cutting
- Splitting
- Making grooves
- Cusp demarcation
- Marking curve

#### Side edges

- Cutting
- Splitting
- Making lines



NEW!



I can make modeling within seconds with simple steps by using Replica Posterior instrument and technique.”  
*Dr. Osama Shaalan, Gold Member of StyleItaliano™*



LMArte™ Solo Anterior and Posterior

## INSTRUMENT DUO FOR SIMPLYFYING YOUR DAILY CASES

LM-Arte™ Solo instruments are ideal for simplifying your daily cases: with just two instruments, you can perform most of your high-end anterior and posterior restorations.

These instruments simplify everything from modeling to ergonomics and even hygiene, with fewer instruments needed on the tray. Streamline your restorative instrumentation with this duo that is all you need for your daily anterior and posterior direct composite restoration cases.





# ONE INSTRUMENT FOR DIRECT VENEERING

LM

feel the  
difference

## LM-Arte™ Solo Anterior

Instrument for high-end esthetic anterior restorations. Rounded and straight spatulas are designed for modeling anterior teeth, especially labial surfaces.



### Sharp tip

- Precision modeling
- Micromodeling
- Limit marking
- Scratching

### Straight edges

- Scrapping

### Flat profile

- Flattening
- Uniform

### Thin blade

- Proximal modeling

### Convex profile

- One-point modeling
- Create depressions
- Create buccal profile
- Create cervical profile
- Access difficult areas

### Angled edge

- Definition
- Scrapping

### Sharpened edges

- Cut, split, separate
- Marginal ridges

### Rounded tip

- Delicate delimitation
- Cervical contouring



# ONE INSTRUMENT FOR POSTERIOR

## LM-Arte™ Solo Posterior

Instrument for high-end posterior composite restorations.

The plugger end is designed for bulk filling and composite material modeling.

The sharp end enables contouring of the occlusal surface anatomy.

### Flat profile

Big excess  
removal  
Medium  
excess  
removal

### Angulation

Access  
for deep  
cavities

### Flat end

Plugger

### Semi-rounded edges

Slope forming  
Excess removal  
Margin removal

### 4-5 mm bulk-fill safety area

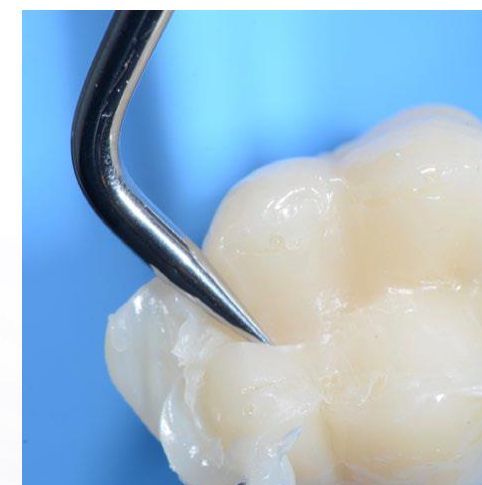
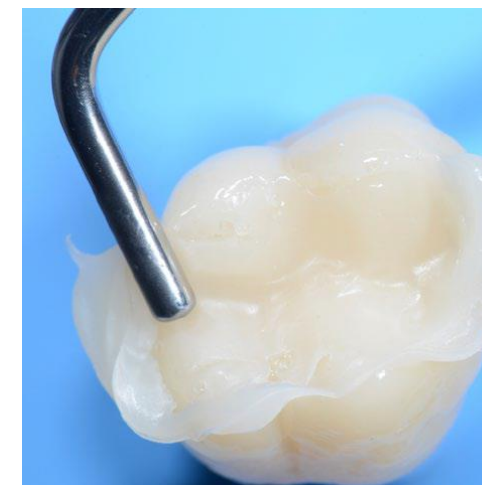
Probe for bulk-fill materials

### Tapered profile

Fine excess removal  
Slope modeling  
Secondary anatomy

### Sharp tip

Precision modeling  
Micromodeling  
Limit marking  
Scratching  
Flow distribution  
Bubble elimination

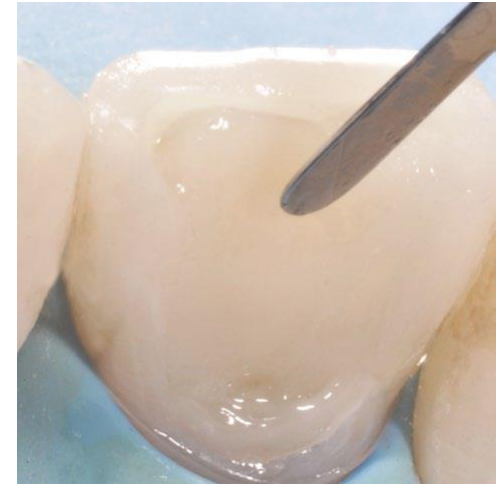




# APPLY ELASTICALLY

## LM-Arte™ Applica

- A very thin, flexible spatula designed for transporting and aesthetic modeling of the composite.
- The flexible working end gently and precisely sculpts composite layers to imitate the natural shape of the tooth
- The thin tip enables modeling in narrow spaces or against the matrix band.



# LM-Arte™ Applica

LM

feel the  
difference

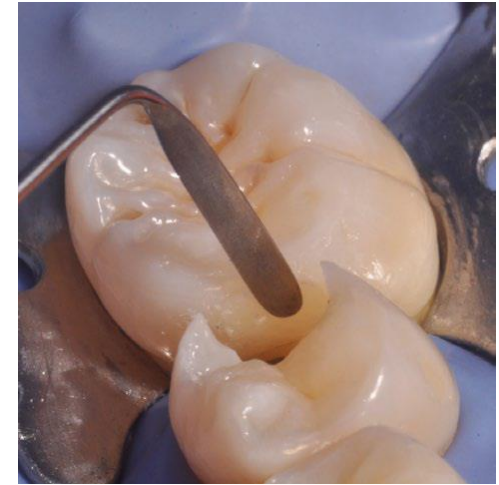




# APPLY WITH A TWIST

## LM-Arte™ Applica Twist

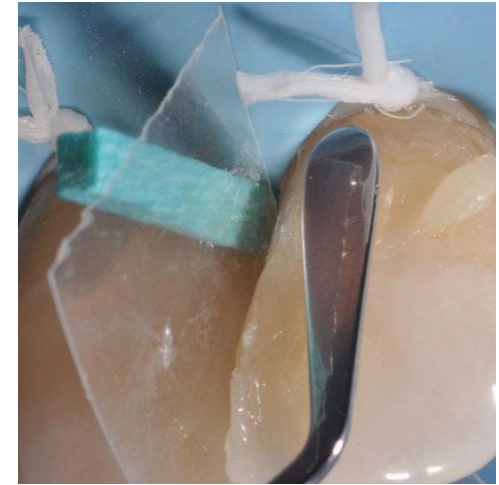
- Especially fine, flexible and narrow spatula for composite modeling.
- Instrument is used for easy modeling in the approximal spaces and marginal ridges in the matrix.
- Bent tips make it possible to reach awkward areas without complicating the working position on the hand unnecessarily.



# MODEL FLEXIBLY

## LM-Arte™ Modella

- Especially fine and wide spatula for composite modeling.
- Particularly suited to large tooth surfaces such as the buccal surfaces of the incisors.
- The wide spatula end flattens the composite efficiently.
- The flexibility, delicacy and sharpness of the tip helps to create precise aesthetic details.
- Works well for applying the composite from a syringe.

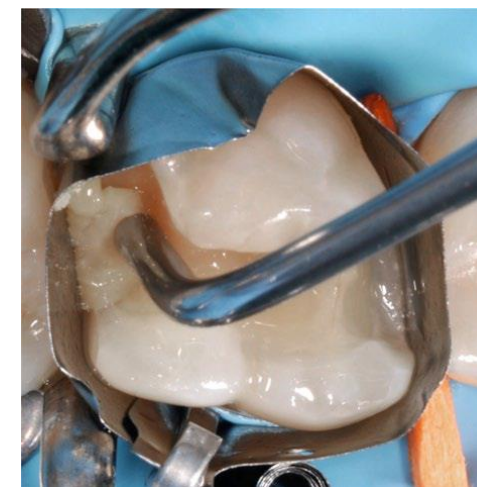




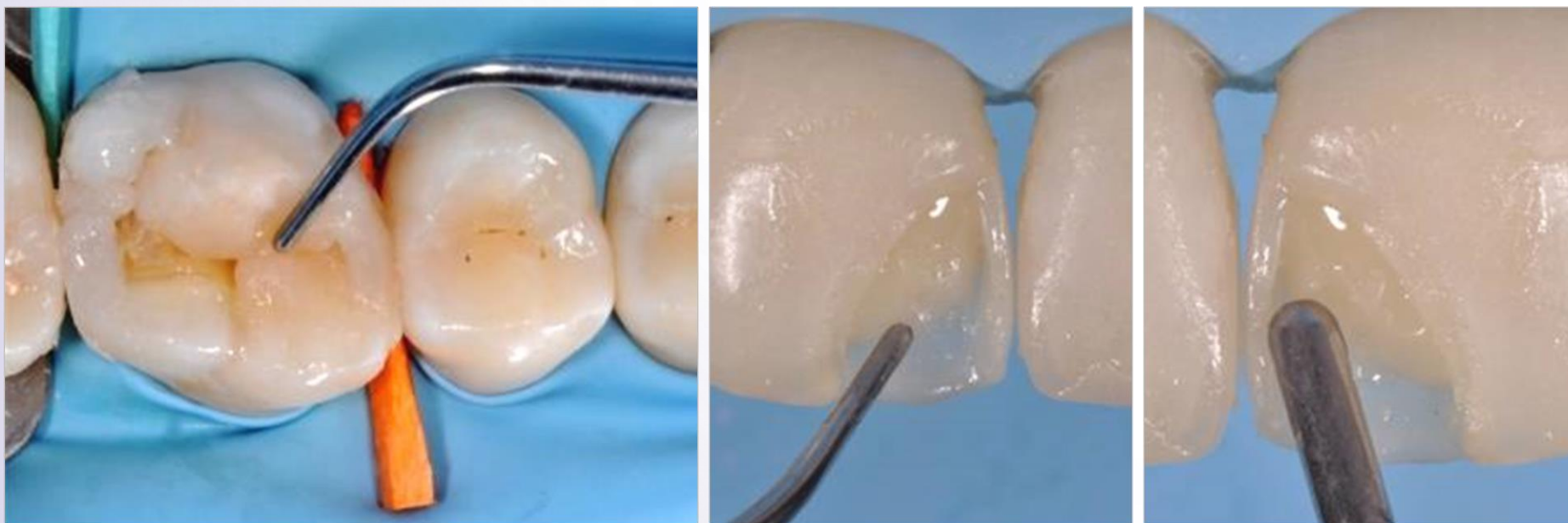
# PUSH SOFTLY

## LM-Arte™ Condensa

- A long, round plugger designed especially for modeling a composite.
- The angulated shanks enable unrestricted access to all cavities.
- Instrument has both a thick and a thin tip that can be used in cavities of different sizes, in both anterior and posterior areas.
- The rounded working end enables a delicage compacting of composite without any risk of adhesion.



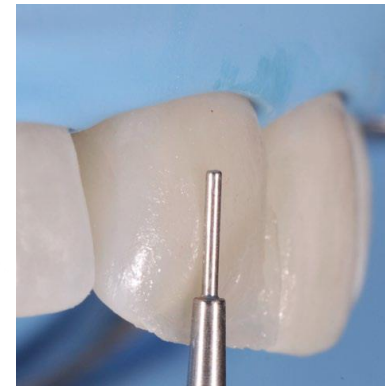
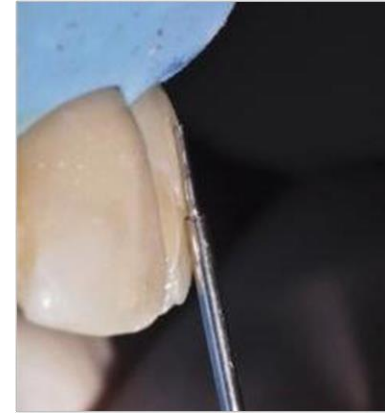
# LM-Arte™ Condensa



# APPLY EVENLY

## LM-Arte™ Misura

- A unique instrument used to apply the correct horizontal and vertical thicknesses of composite layers on the anterior restorations.
- After the layering but before the polymerization of the dentine composite, the thinner, cylindrical tip is placed on the natural tooth enamel. The unpolymerized composite below the cylindrical tip is then gently modeled, leaving an optimal space for the enamel composite layer.
- The thicker, short tip of the instrument is placed horizontally on the margin of the prepared cavity, leaving the edge of the tip on the original enamel. This allows you to determine the right amount of transparent composite to apply on the finishing line.
- The final aesthetic restoration consists of correctly balanced opaque and translucent composites, avoiding the unpleasant gray effect of some composites.





# FILL EVENLY

## LM-Arte™ Posterior Misura

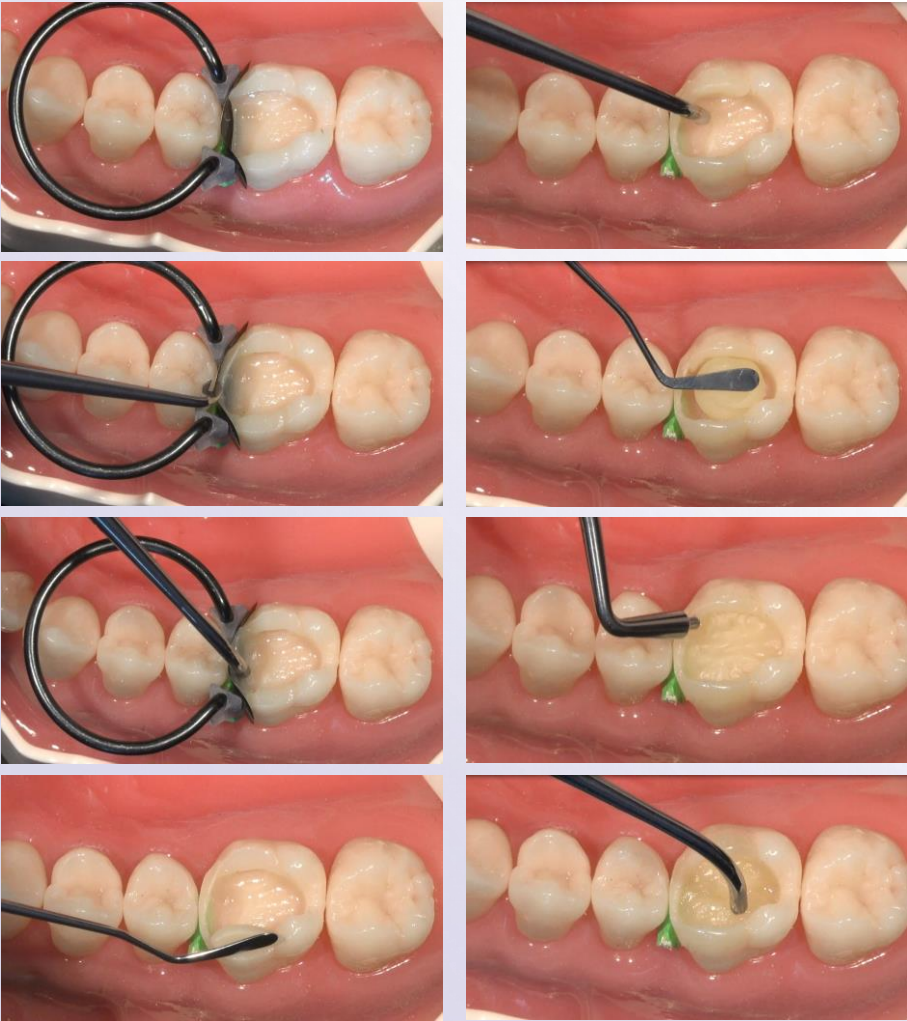
- Posterior version of the popular LM-Arte™ Misura instrument.
- Designed for providing the required vertical thickness of composite layers on posterior restorations.
- The fork tip of the instrument allows modeling of the proximal wall to match the height and anatomy of the neighboring tooth with the presence of a matrix.
- The tip is placed horizontally on the margin of the prepared cavity so that the edge of the tip remains on the original enamel. This determines the right amount of transparent composite to apply on the finishing line.



# LM-Arte™ Posterior Misura



# Direct posterior restoration with LM-Arte™

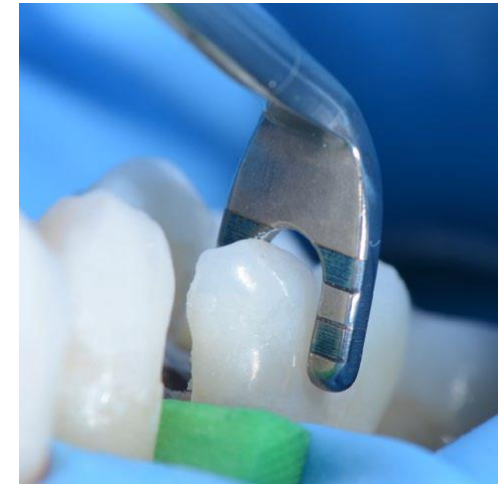




# EVALUATE EXPLICITLY

## LM-Arte™ Cusp Misura

- Unique instrument for estimating cusp thickness and height for evaluating the need for cusp preparation when performing adhesive restorations. Ideal for evaluating the strength of the natural tooth structure and choosing the restorative technique to be used.
- If the forked instrument tip penetrates up to its marks, the tooth structure is too weak to withhold occlusal forces with a direct restoration, and other clinical options must be considered.



# LM-Arte™ Cusp Misura



# SCULPT DELICATELY

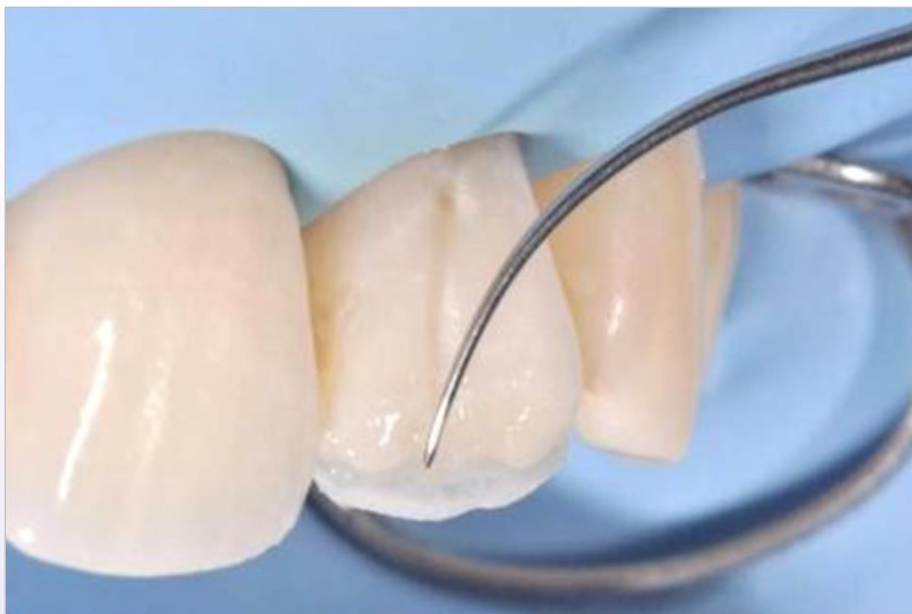
## LM-Arte™ Fissura

- A modeling instrument with extremely sharp pointed tips.
- The conical tip is perfect for sculpting the anatomy of occlusal area of the posterior teeth.
- The fine, probe-shaped tip is optimal for modeling fissures and mamelons as well as for layering characterization composites and sealants.
- The flexibility of instrument enables the gentle probing to ensure there is no excess bonding resin remaining on tooth surfaces.





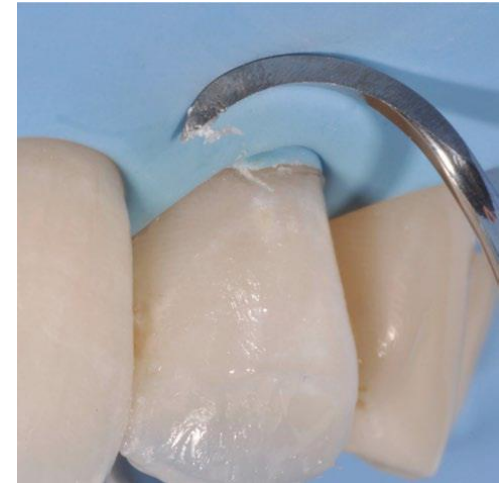
# LM-Arte™ Fissura



# FINISH NEATLY

## LM-Arte™ Eccesso

- An instrument designed for the removal of composite and bonding residue.
- The special angulated working ends of the instrument are ideal for the removal of excess from cervical anterior and interproximal molar areas.
- This fine but solid instrument is characterized by the optimized length, thickness and width of its blade.



# LM-Arte™ Eccesso





# OVERCOME THE GINGIVAL RETRACTING CHALLENGE

LM feel the difference

The aim in restorative treatment of a cervical lesion is to achieve perfect margin sealing, a strong bond, and optimal polishing of the composite material. Mechanical gingival retraction in cervical restorations can be traumatic if improperly performed.

The LM-Gengiva™ instrument with gingival retractors is used to avoid injuring the gingiva unnecessarily and obtain the best clinical result. With this method, the desired end result is achieved: the soft tissue is not harmed and the aesthetic requirements are met.

LM-Gengiva™  
gingival retracting kit

LMErgoSense® LM 7556K ES

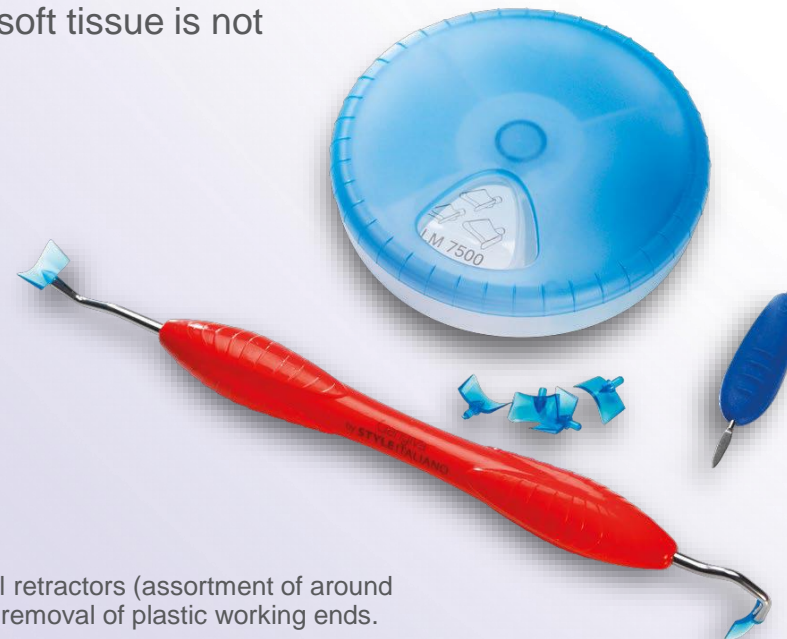
LMErgoMax™ LM 7556K XSI

Incl. Lm-gengiva™ hand instrument, blue gingival retractors (assortment of around 90 pcs, 30 pcs / size) and Lm-multilever™ for the removal of plastic working ends.



## GINGIVAL RETRACTORS

- Retract the gingiva from the restoration
- Hard plastic tip allows for a strong retraction
- The plastic tips allow a certain flexibility for more adaptation while pressing
- The tip acts as a tight seal between the gingiva and tooth
- Protects the gingiva and reduces the likelihood of debonding failure
- The bonding interface and the gingival margin can be seen clearly; ideal contrast with soft tissues
- Can be customized with a drill to fit a convex or concave root detect
- No bonding of the adhesive materials to the tip surface
- No interference with polymerization
- Disposable



LM

feel the  
difference

# SCULPT MASTERPIECES





THANK YOU!